

# MONTHLY MEMBERSHIP PROGRESS REPORT

District 4 C6

Results as of: 3/31/2026

GMT:

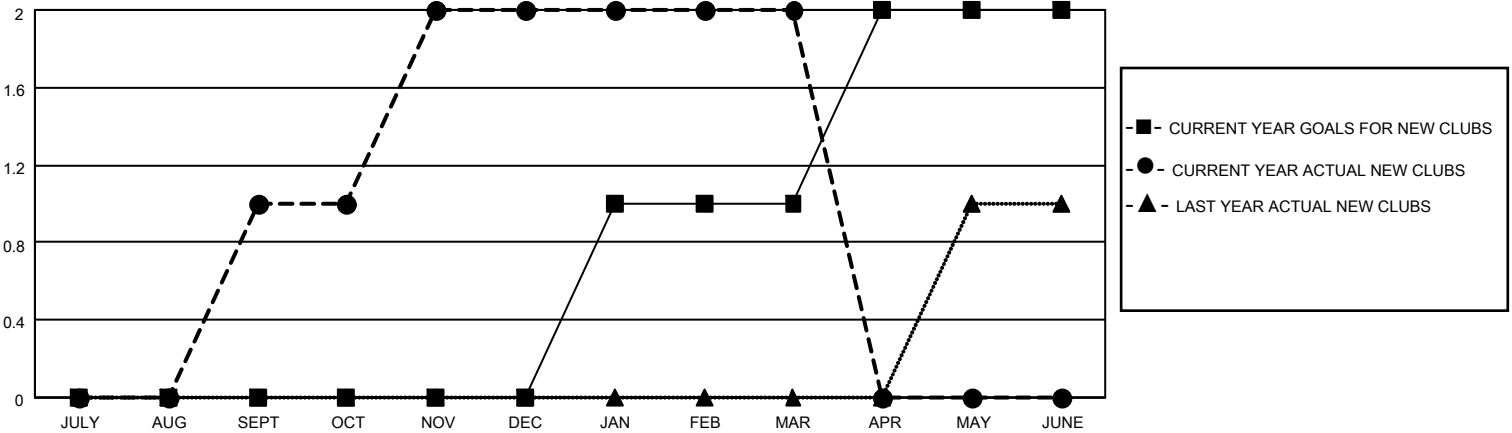
LOCATION CALIFORNIA

GMT CA

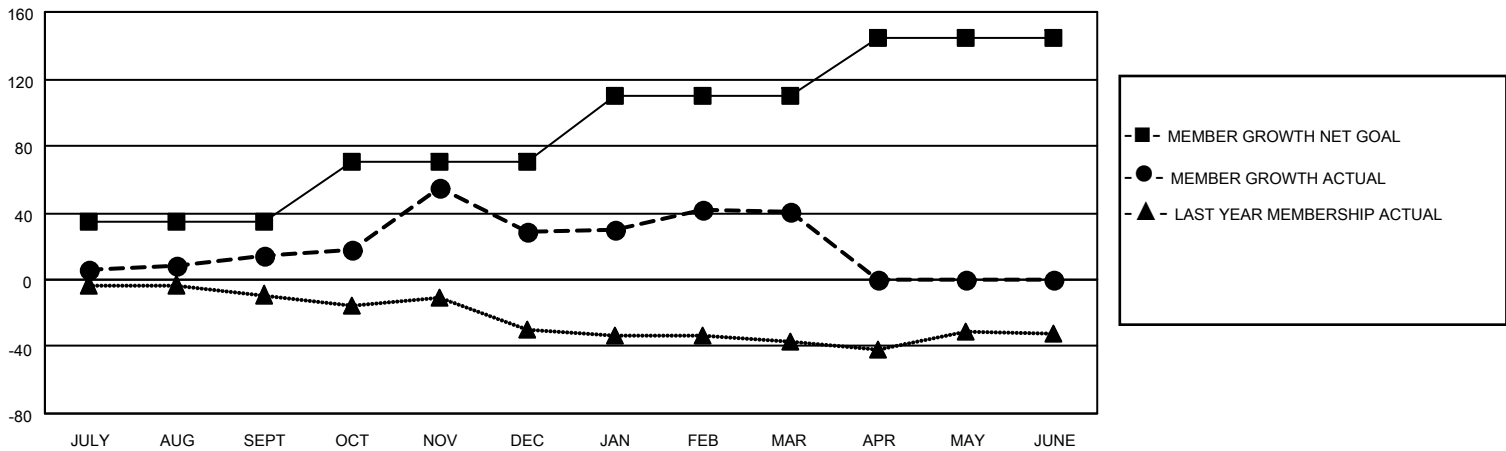
Clubs			
RESULTS FOR 2025-2026			
QUARTER	NEW CLUB GOAL	NEW CLUBS	DROPPED CLUBS
JULY/AUG/SEPT	0	1	0
OCT/NOV/DEC	0	1	0
JAN/FEB/MAR	1	0	0
APR/MAY/JUNE	1	0	0

Members			
RESULTS FOR 2025-2026			
QUARTER	MEMBER GROWTH NET GOAL	MEMBER GROWTH ACTUAL	DROPPED MEMBERS ACTUAL (including transfers)
JULY/AUG/SEPT	35	62	42
OCT/NOV/DEC	35	65	44
JAN/FEB/MAR	40	38	22
APR/MAY/JUNE	35	0	0

GOALS AND ACTUAL NEW CLUBS CUMULATIVE



GOALS AND ACTUAL MEMBERS CUMULATIVE



DROPPED CLUBS: 0	25 CLUBS OF 41 ADDED 1 OR MORE NEW MEMBERS	<u>GENDER DISTRIBUTION</u>	
<u>DROPPED MEMBERS</u>		MALE	521 (51.43%)
DECEASED	3	FEMALE	491 (48.47%)
CLUB CANCELLED	0	TOTAL FAMILY UNIT MEMBERS	
OTHER	105	152	
TOTAL	108	FAMILY MEMBERS PAYING HALF DUES	
		79	

[CLICK HERE FOR CUMULATIVE MEMBERSHIP DATA](#)